



Inspire *the* Innovations

UHV Linear Transfer Section

Marketing Department

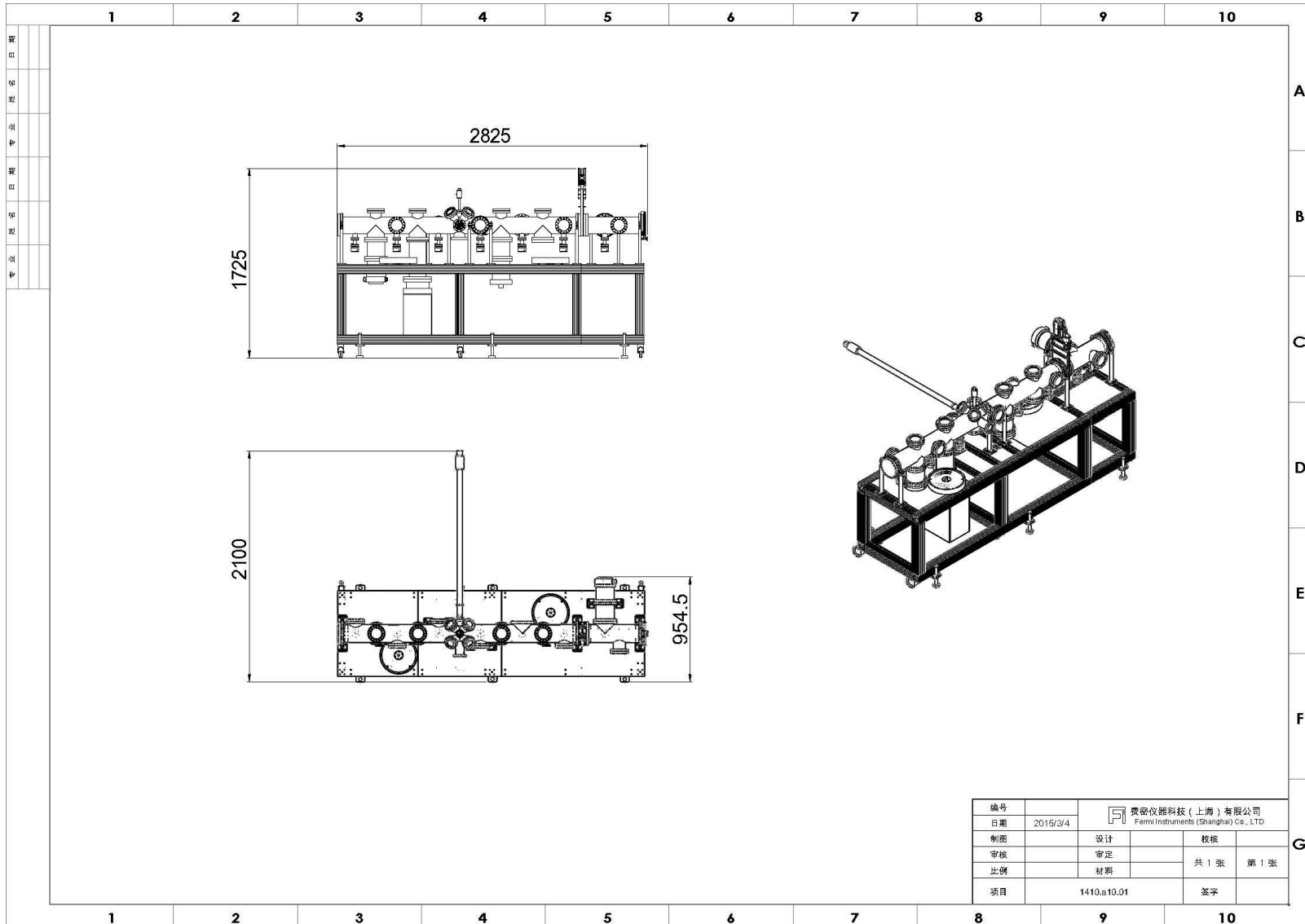
April, 2015

- Introduction to Fermi UHV Linear Transfer Section

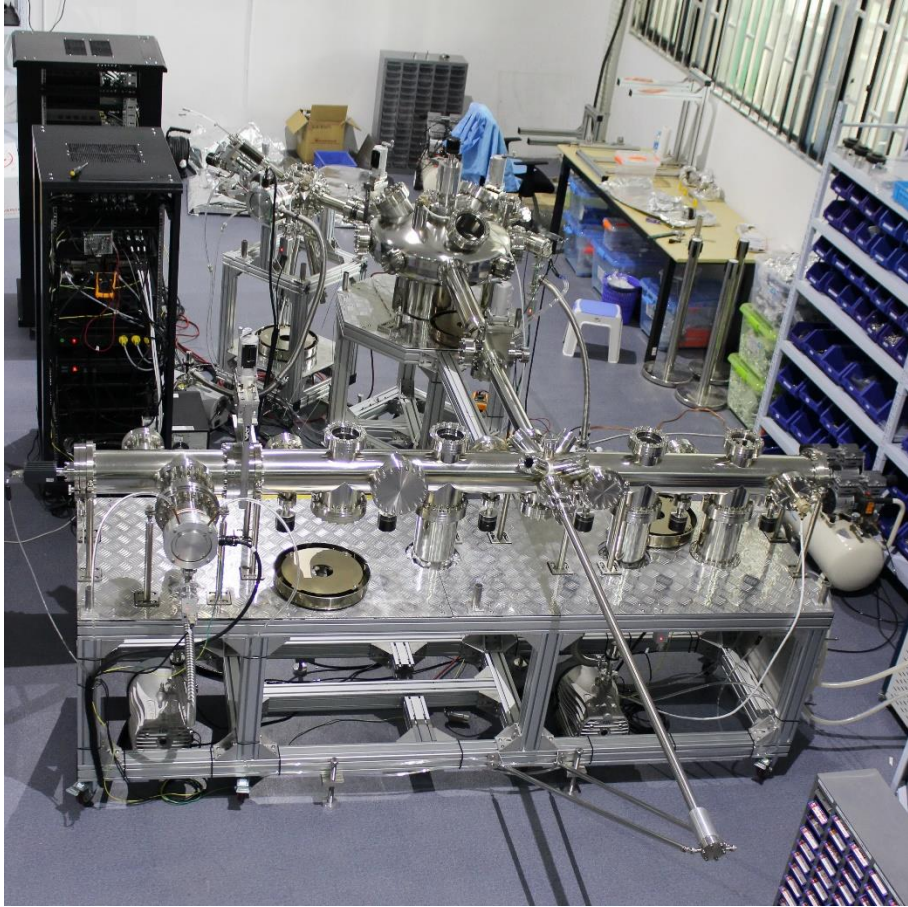
UHV Linear Transfer Section

- Could work as an individual unit or as clusters
- Sample Cart could travel across gate valves
- Pumped with Mag-Lev Turbo Pumps/ Ion Pumps/ NEG Pumps
- Base Pressure < 5E-10 mbar, no grease/oil used
- The Sample Cart could be manually operated or motorized
- Viewports for observation
- Capable of connecting various UHV systems together
- Capable of transfer various samples
- Capable of accommodate multiple Sample Cart
- Could be further customized designed for special purpose
- With Frames and Bakeout Tent, quick setup and relocation

System Design



System Gallery-Over View

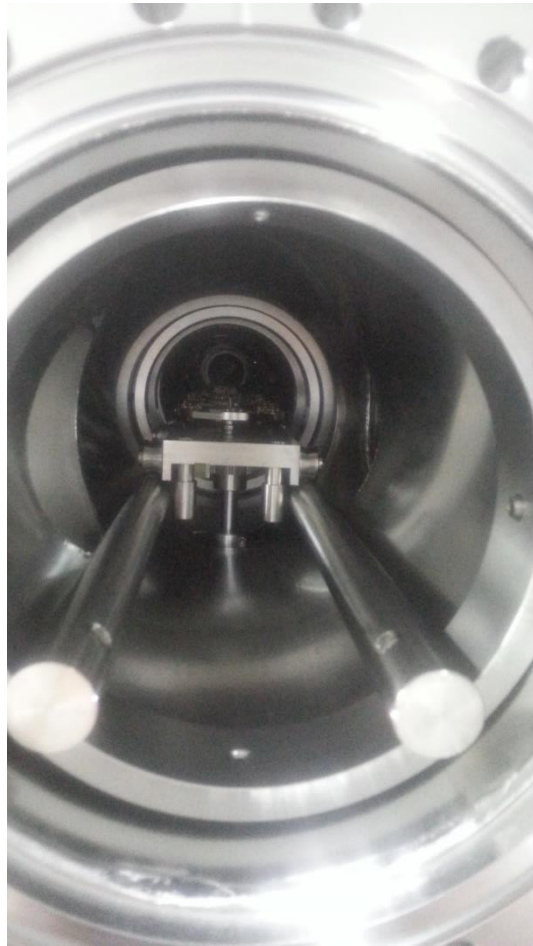


System in Normal Operation



System in Bakeout

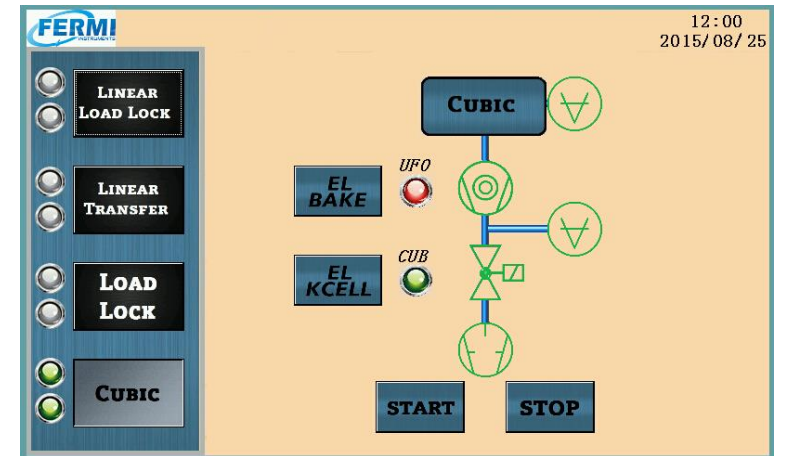
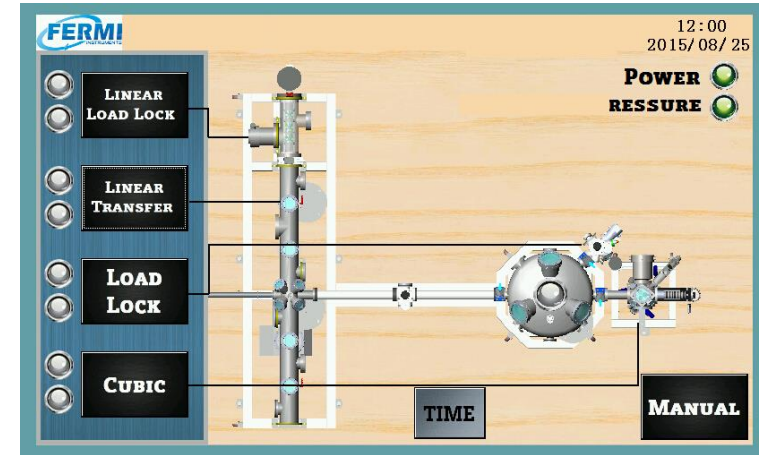
System Gallery-Details



Sample Cart & Rail



Bakeout Module



UHV Control Interface